

AMP

ARABIA MOUNTAIN PATH

SELF-GUIDED PATH TOUR

Explore a land 400 million years in the making. *The Arabia Mountain National Heritage Area (AMNHA)* is an open landscape of breathtaking beauty, peace, and wonder just east of Atlanta along I-20. Dominated by two massive granite outcrops, it offers visitors natural wonders, compelling history and heart-pumping activity.

The *PATH Foundation* trail within the AMNHA is designed to link cultural, scenic, natural and historic sites. More than 30 miles of dedicated, paved trails are open to bikers and hikers. We've highlighted some of our favorite sites here. This interactive PDF can either be printed or viewed on a digital device. Links, when clicked, will lead to additional information.

There are several opportunities with the *Davidson-Arabia Mountain Nature Preserve* to hike trails on foot and bike racks are located at the entrances to several of these trails. Remember to always be prepared for your ride, take plenty of water, a cell phone and sunscreen. The terrain is hilly and some bikers should be aware that some climbs are particularly strenuous.

- 1 Historic District of Lithonia
- 2 Railroad Cut
- 3 Vaughters' Farm
- 4 Arabia Mountain & Quarry Remains
- 5 Quarry Office Ruins
- 6 Farming Terraces
- 7 Horace King Commemorative Covered Bridge
- 8 Evans Mill Ruins
- 9 Historic District of Klondike
- 10 Pole Bridge Creek Wastewater Treatment Plant

- 11 Flat Rock Community
- * 12 Lyon Farm
- 13 South River Bridge #1
- 14 Alexander Barn
- 15 The Parker House
- * 16 Panola Mountain
- * 17 Serpentine Bridge
- 18 DeCastro Retreat
- 19 Lorraine Trailhead
- 20 South River Bridge #2
- * 21 Monastery of the Holy Spirit

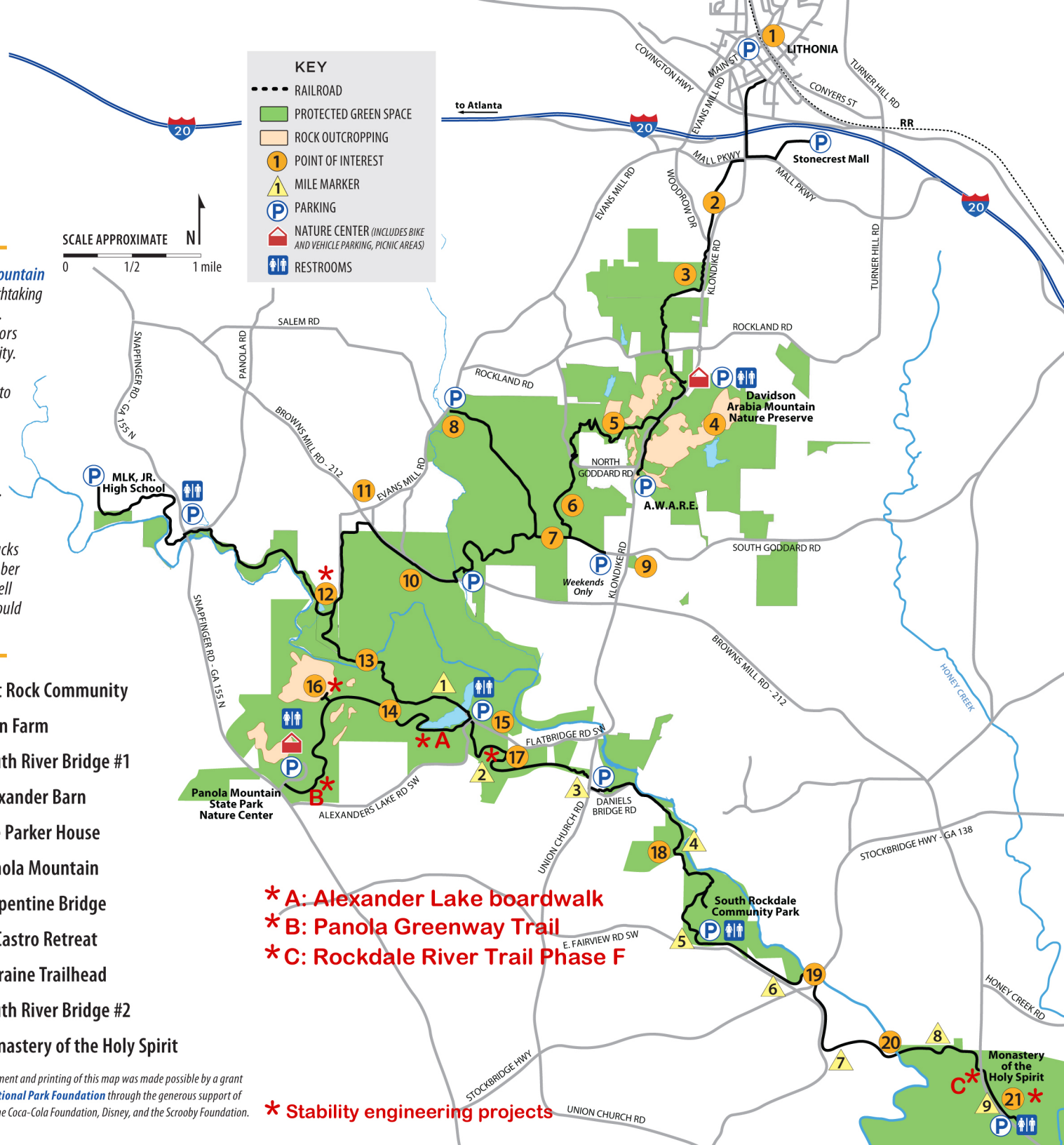
The development and printing of this map was made possible by a grant from the *National Park Foundation* through the generous support of Coca-Cola, the Coca-Cola Foundation, Disney, and the Scooby Foundation.

KEY

- RAILROAD
- PROTECTED GREEN SPACE
- ROCK OUTCROPPING
- 1 POINT OF INTEREST
- ▲ MILE MARKER
- P PARKING
- 🏠 NATURE CENTER (INCLUDES BIKE AND VEHICLE PARKING, PICNIC AREAS)
- ♿ RESTROOMS

SCALE APPROXIMATE

0 1/2 1 mile



* A: Alexander Lake boardwalk
 * B: Panola Greenway Trail
 * C: Rockdale River Trail Phase F

* Stability engineering projects